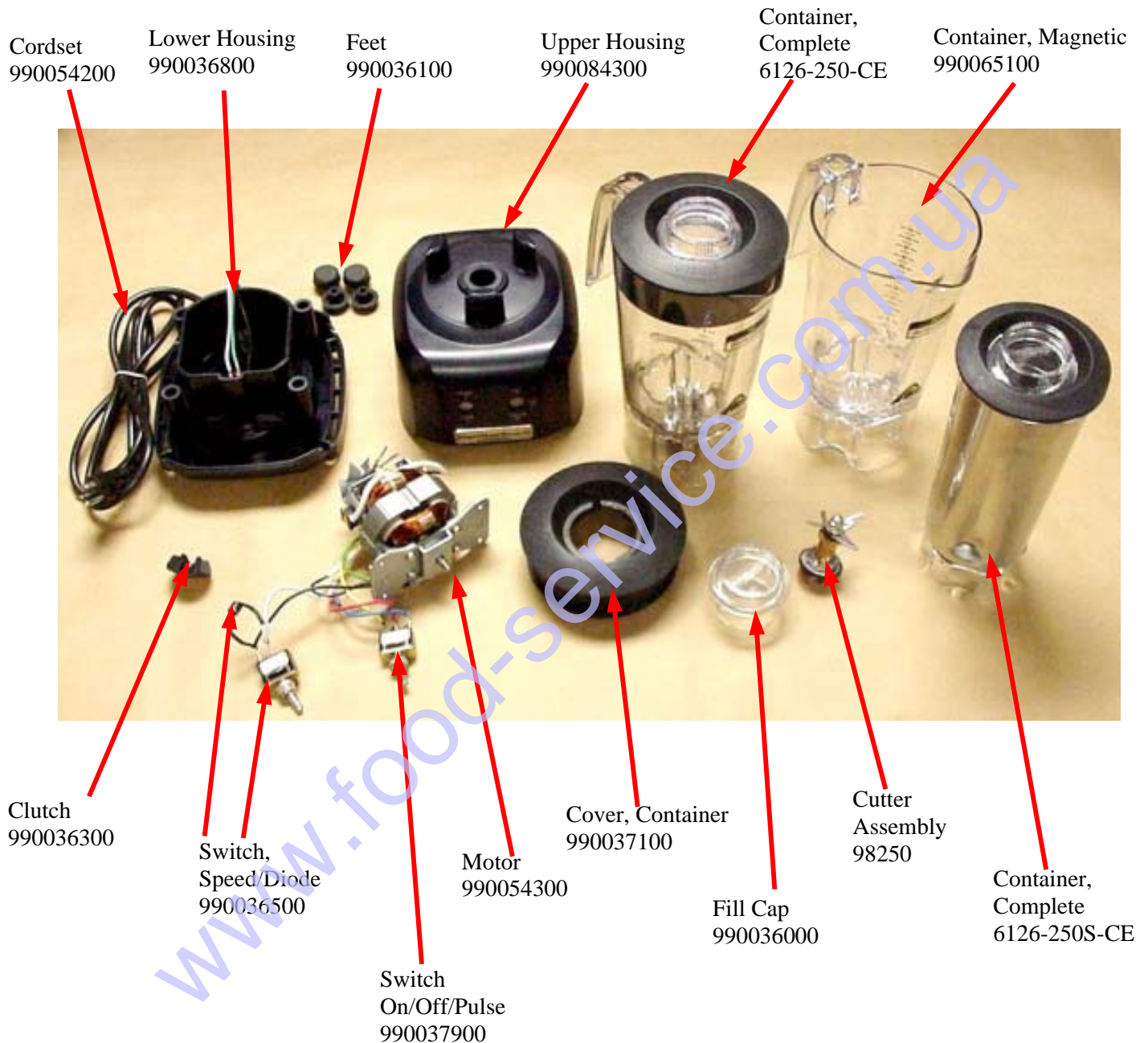


Replacement Parts Diagram

Model HBB250-CE (Series A-C)

PROPRIETARY RIGHTS NOTICE This document and all information contained within it is the property of Hamilton Beach Brands, Inc. (HBB). It is confidential and proprietary and has been provided to you for a limited purpose. It must be returned or destroyed upon request. Disclosure, reproduction or use of this document and any information contained within it, in full or in part, for any purpose is forbidden without the prior written consent of HBB. No photographs may be taken of any article fabricated or assembled from this document without the prior written consent of HBB.



| | | | | | | | | |
|--|-----------------------|----------|--|---------|--------------|-----------|------|---|
| Hamilton Beach 4421 Waterfront Drive Glen Allen, VA 23060 | Revision Description: | | Changed Upper Housing part number and added Jar Sensor | | | | | |
| | Request Number: | HQE-6792 | Revision Date: | 8/19/08 | Approved by: | | | |
| | Issue Code(s): | CS, SP | Page: | 1 of 4 | Document #: | 5100086XX | Rev: | D |

Replacement Parts Diagram

Model HBB250-CE (Series A-C)

PROPRIETARY RIGHTS NOTICE This document and all information contained within it is the property of Hamilton Beach Brands, Inc. (HBB). It is confidential and proprietary and has been provided to you for a limited purpose. It must be returned or destroyed upon request. Disclosure, reproduction or use of this document and any information contained within it, in full or in part, for any purpose is forbidden without the prior written consent of HBB. No photographs may be taken of any article fabricated or assembled from this document without the prior written consent of HBB.

RFI Board
990064600

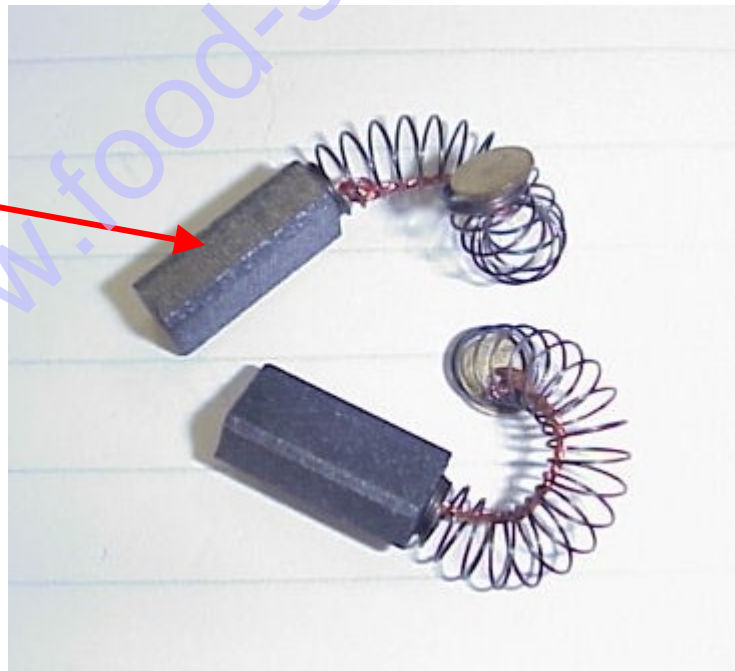


Cordset Socket
990064800



Jar Sensor
990084400

Brush Motor Kit
990075100

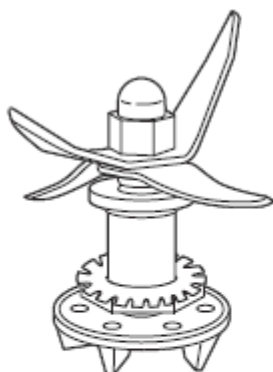


| | | | | | | | | |
|--|-----------------------|----------|--|---------|--------------|-----------|------|---|
| Hamilton Beach 4421 Waterfront Drive Glen Allen, VA 23060 | Revision Description: | | Changed Upper Housing part number and added Jar Sensor | | | | | |
| | Request Number: | HQE-6792 | Revision Date: | 8/19/08 | Approved by: | | | |
| | Issue Code(s): | CS, SP | Page: | 2 of 4 | Document #: | 5100086XX | Rev: | D |

Replacement Parts Diagram Model HBB250-CE (Series A-C)

PROPRIETARY RIGHTS NOTICE This document and all information contained within it is the property of Hamilton Beach Brands, Inc. (HBB). It is confidential and proprietary and has been provided to you for a limited purpose. It must be returned or destroyed upon request. Disclosure, reproduction or use of this document and any information contained within it, in full or in part, for any purpose is forbidden without the prior written consent of HBB. No photographs may be taken of any article fabricated or assembled from this document without the prior written consent of HBB.

Cutter Assembly Replacement Instructions



**Cutter Repair Kit
for Rio Blenders**

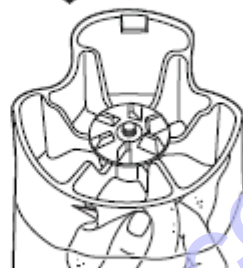


⚠ WARNING



Cut Hazard
Handle cutter
assembly with
care.
Failure to follow
these instructions
can result in cuts
or other injuries.

Removing the old cutter assembly



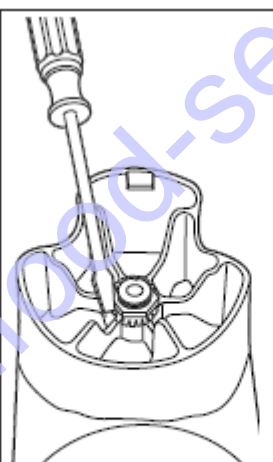
Hold the blades with a
cloth. Unscrew the clutch
counterclockwise.



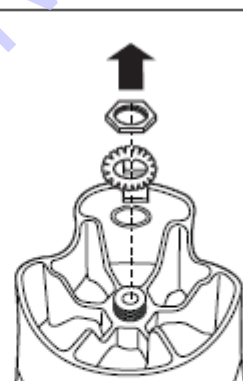
Remove the clutch and
felt washer.



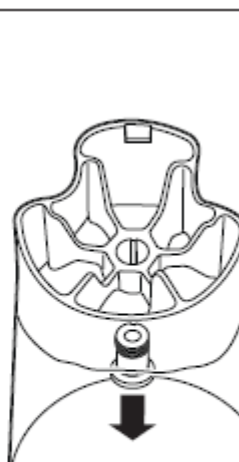
Remove the shaft and
blade assembly



Use a flathead screw-
driver to flatten the tabs
on the tab washer.



Remove the nut by
turning counterclockwise
by hand. Then remove
the tab washer and
pressure washer.

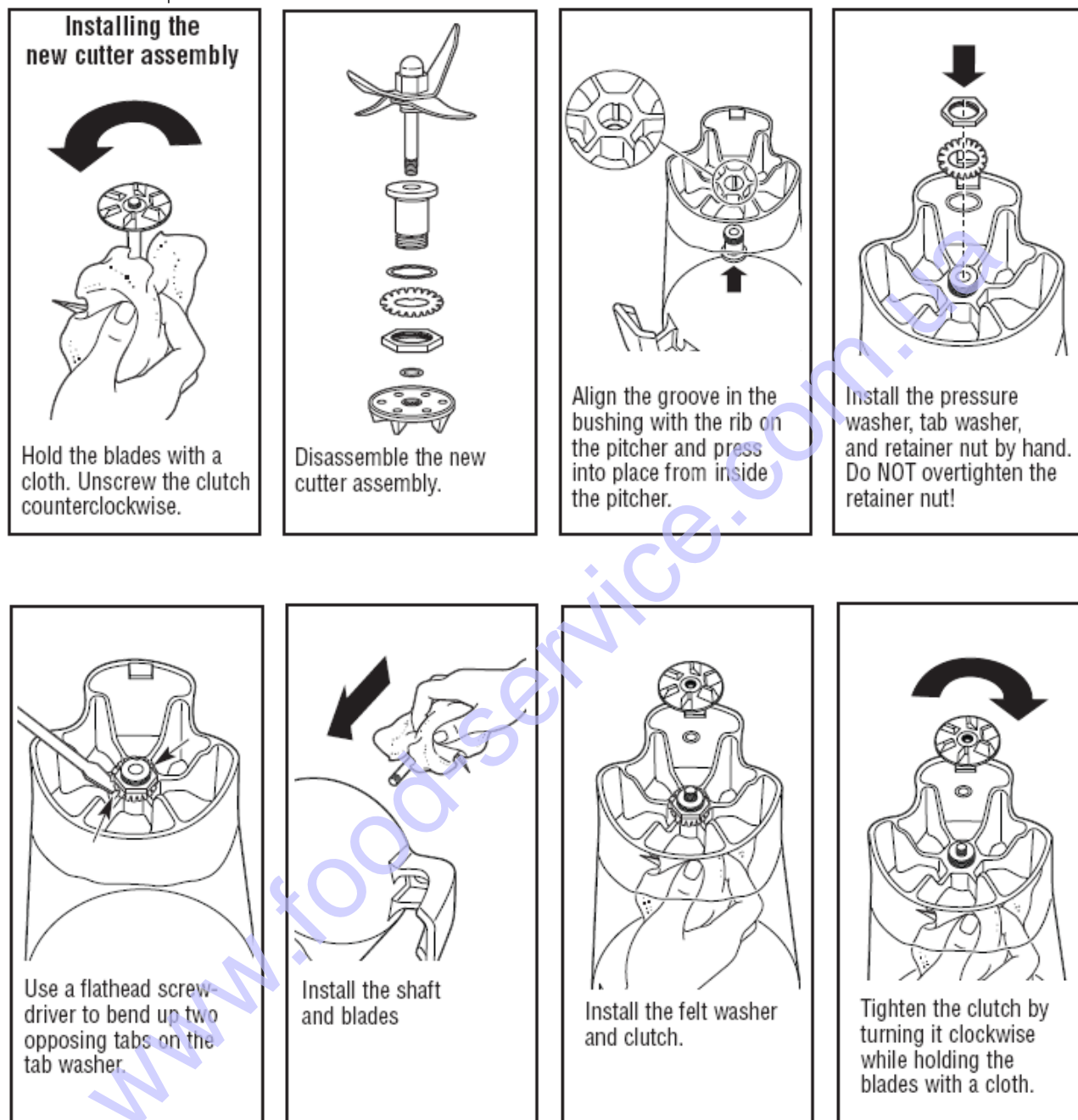


Remove bushing.

| | | | | | | | | |
|--|-----------------------|----------|--|---------|--------------|-----------|------|---|
| Hamilton Beach 4421 Waterfront Drive Glen Allen, VA 23060 | Revision Description: | | Changed Upper Housing part number and added Jar Sensor | | | | | |
| | Request Number: | HQE-6792 | Revision Date: | 8/19/08 | Approved by: | | | |
| | Issue Code(s): | CS, SP | Page: | 3 of 4 | Document #: | 5100086XX | Rev: | D |

Replacement Parts Diagram Model HBB250-CE (Series A-C)

PROPRIETARY RIGHTS NOTICE This document and all information contained within it is the property of Hamilton Beach Brands, Inc. (HBB). It is confidential and proprietary and has been provided to you for a limited purpose. It must be returned or destroyed upon request. Disclosure, reproduction or use of this document and any information contained within it, in full or in part, for any purpose is forbidden without the prior written consent of HBB. No photographs may be taken of any article fabricated or assembled from this document without the prior written consent of HBB.



| | | | | | | | | |
|--|-----------------------|--|--|----------------|--------|-------------|--------------|---------------|
| Hamilton Beach 4421 Waterfront Drive Glen Allen, VA 23060 | Revision Description: | | Changed Upper Housing part number and added Jar Sensor | | | | | |
| | Request Number: | | HQE-6792 | Revision Date: | | 8/19/08 | Approved by: | |
| | Issue Code(s): | | CS, SP | Page: | 4 of 4 | Document #: | 5100086XX | Rev: D |